

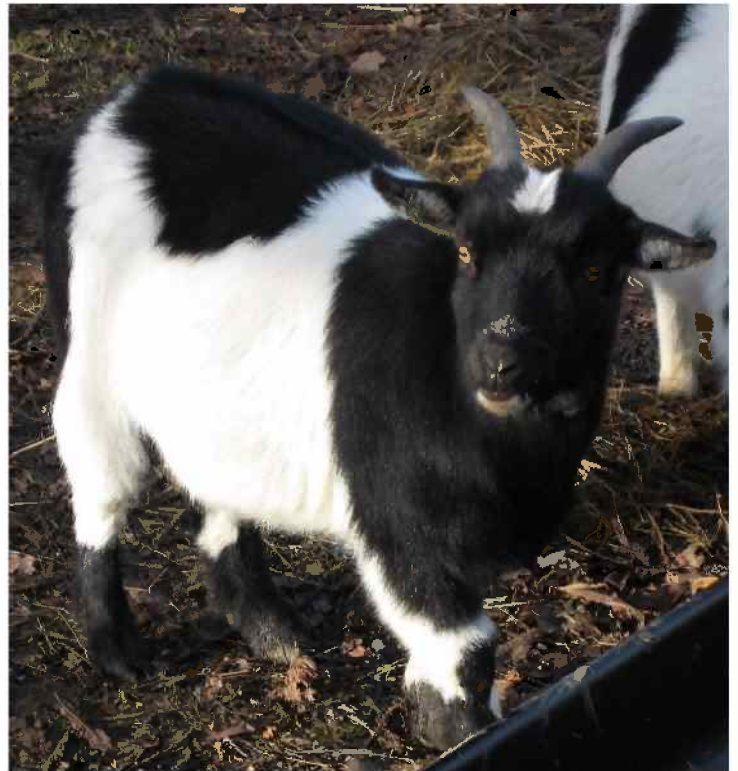


# Goats



**Boer goat (front)  
Sally Ann (behind)**

**Pygmy goat**





# **Domestic Goats**

**Domestic Goats have been transported all over the world and mixed in their breeding; hence there is no clearly known home range. The Pygmy goat is a smaller breed of domesticated goat originating from Cameroon in West Africa.**

**They are related to sheep and are one of the oldest domesticated animals in the world, used for their milk, meat, hair and skins and sometimes as pets! Goats range in size, colour and coat length according to breed. Most goats have two horns, but some are hornless (polled) while others have as many as eight horns (polycerate).**

**Like pigs, they are very adaptable to new environments and will eat a wide range of vegetation.... and sometimes even clothes! They like to browse on grasses, shrubs and trees and have a remarkable ability to climb for what they want.**

**Goats are very intelligent and curious by nature: they will explore anything new or unfamiliar in their surroundings and in combination with their excellent agility and balance have become known as experts at escaping.**



## **Did You Know..?**

- **Goat's eyes have square pupils not round ones and can be any colour from the more normal browns and yellows to blue!**
- **There are over 450 million goats in the world?**
- **Pygmy goat kids can eat grain and roughage within a week of being born?**
- **Goats milk takes a third of the time to digest than that needed for Cows milk?**
- **Both Billy (Male) and Nanny (Female) Goats have a Beard!**



# Sheep

Sheep and Goats were domesticated around the same time as the Dog. They are 'Ruminants' which means they have four 'stomachs' to digest food.

Their fleece comes in a number of colours and is used to make wool. Adult male Sheep are known as Rams and establish territory by Head-butting other Rams. The female sheep or Ewes normally give birth to one or two Lambs about 5 months after mating.

Lambs that are rejected by their mothers are either bottle-fed, or adopted by a Ewe who may have lost a Lamb soon after birth. The Shepherd tricks the Ewe into allowing the orphan lamb to suckle from her udder.

At Belmont we have  
Jacob



and



Herdwick sheep



## **Did You Know..?**

- **There are five times as many sheep in Australia as there are people...**
- **The movie 'Babe' was shot with help from 550 sheep...**
- **The world's most famous sheep was called Dolly. She was the successful 276th attempt to clone a sheep, the first mammal ever to be cloned.**
- **A single sheep's fleece may contain and as many as 26 million hairs.**



# Cattle – Dexter



The Dexter breed originated in Ireland and brought to England in 1882. It is a small breed with mature cows weighing between 600-700 lbs and mature bulls weighing about 1000 lbs.

Like other 'Ruminants', Cattle have a four-chambered stomach. Each chamber has a different mechanism, ensuring that as many nutrients are digested as possible.

The Dexter Cattle here at Belmont Farm are a smaller type of the standard breed. They were very rare until a breeding program was recently established and they are now very popular with smallholders.

Dexter's are classified as a dual-purpose breed; used for milk and beef. However they are often listed as a triple-purpose breed, since they are also used for oxen. Their versatility is one of their greatest assets, and is why they can be found in a wide range of countries. Dexter cattle live in North America, South Africa, Australia, and much of Europe.



## **Did You Know..?**

- **Cattle are renowned for producing Methane, which along with CO<sub>2</sub> is a greenhouse gas. Livestock and poultry produce more greenhouse gases than all of the world's transport combined.**
- **In Britain an average of 1,040,000 tonnes of Beef are eaten each year.**
- **Over 800 breeds of cattle are recognized worldwide.**
- **UK milk production for 2008/09 was 12,858,000,000 litres.**
- **Cows eat about 50kg food and drink up to 100 litres of water each day.**



# Kune kune



**Kune kune (pronounced cooney cooney) are a small pig from New Zealand, and their name means 'fat and round' in the native Maori language.**

**Nobody knows exactly how their ancestors arrived in New Zealand. Either European whalers and Seal hunters took them to be used as food, or early Polynesian settlers introduced them. Wherever they came from they are very friendly, curious little pig!**

**Adults stand between 24" and 30" high, weighing 55kg to 110kg. They have a medium to short snout, and either pricked or flopped ears. The most unusual feature of most Kune Kune are the tassels called 'Piri Piri', under their chins, similar to those of a goat.**

**They came very close to extinction until in the 1970's, when two wildlife park owners set out on a mission across the country to obtain as many Kune kune as they could in an attempt to re-establish the breed.**



## **Did You Know..?**

- **Pigs have been taken around the world by humans and in many places set free to become 'Feral' or wild pigs...**
- **Feral pigs damage environments by rooting for food, destroying bird nests and because of their aggressive behaviour...**
- **The pig is one of the 12-year cycle of animals that appear in the Chinese zodiac. Believers in Chinese astrology associate each animal with certain personality traits, the pig being 'happy and honest'**



# Alpaca



**Alpacas come from central and southern Andes Mountains in Peru and Argentina and live as high as 4800 meters.**

**They are sometimes confused with Llamas but they are not the same!**

**They come from the same family but are usually smaller with the average height at the shoulder of an Alpaca is 3ft (0.92m) and they weigh on average 68kg.**

**Alpaca fleece, which grows over the entire body including faces and legs, is made up of a heavy, fine but very strong fibre. If left uncut it will grow down to the ground. It comes in up to 22 different colours and shades and they can produce around 4 kilo's of fleece per year.**



## **Did You Know..?**

- **Alpacas are in the same family as Camels?**
- **They can be used to protect other livestock from foxes?**
- **Get very lonely if they aren't with one or more other Alpacas?**
- **Some Alpacas have been successfully house trained!**
- **An Alpaca mother will not touch her young until it stands up?**



# Grey Rhea



The Rhea is a large flightless bird from eastern South America. It is noted for its breeding habits, and for the fact that a group has established itself in Germany in recent years. Adult birds have an average weight of 20–27 kg and measure 129cm long from beak to tail; they usually stand about 1.50m tall. Males are generally bigger than the females.

Greater Rheas have a fluffy, tattered-looking grey or brown plumage. In general, males are darker than females. Rhea Chicks are grey with dark strips running from nose to tail.

They do not usually eat grains like wheat or barley, preferring to eat green leafy plants. They seem to enjoy eating tough and even spiny plants like Thistles! Like many birds the Grey Rhea swallows pebbles to help grind down food for easy digestion. They are attracted to sparkly objects like jewellery and pieces of glass and will eat them if they fit in their mouths!